

REVISIONS	DATE
NOVEMBER 20, 2015	
DECEMBER 9, 2015	
DECEMBER 14, 2015	

PROPOSED RETAIL DEVELOPMENT FOR:
OXFORD REAL ESTATES EQUITIES
LOCATION
N.E.C. OF 37TH AVENUE & S. BROADWAY
MINOT, NORTH DAKOTA

Reitan Architects, LLC.
1325 Wiley Road - Suite 166 - Schaumburg, Illinois 60173
PH. 847-519-1227 - FAX 847-519-0347
Assumed Name No. 184-004083

THIS IS TO CERTIFY THAT THESE PLANS WERE PREPARED UNDER MY PERSONAL SUPERVISION AND TO THE BEST OF MY KNOWLEDGE AND BELIEF THEY COMPLY WITH ALL REQUIREMENTS OF THE CITY OF MINOT, NORTH DAKOTA.

SHEET NAME
PRELIMINARY
ELEVATIONS

SHEET
A2
OF 2
© Copyright, Reitan Architects, LLC.

PROJECT NO.
1553

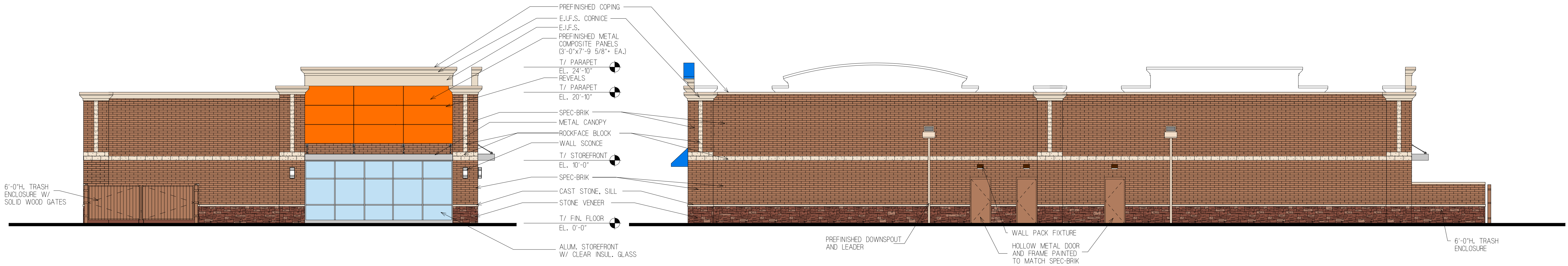


West Elevation

Scale: 1/8" = 1'-0"

South Elevation

Scale: 1/8" = 1'-0"

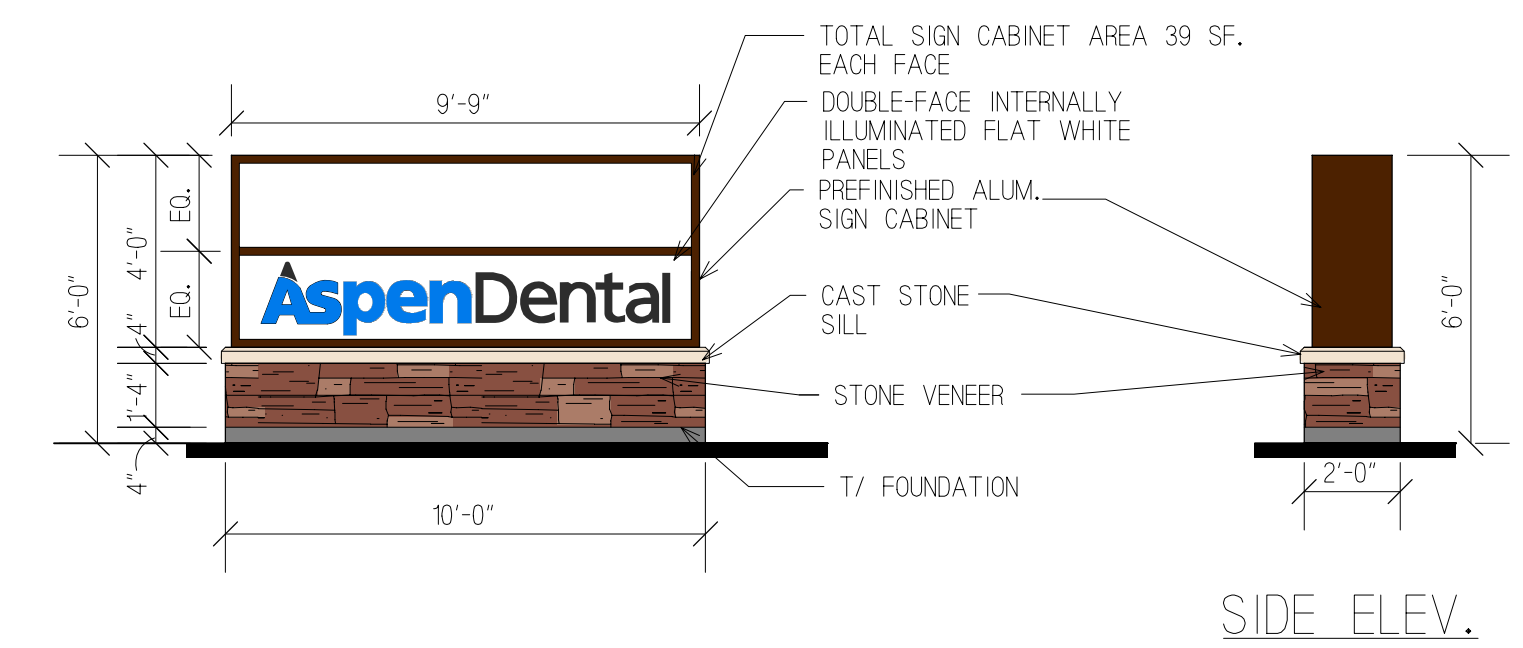


North Elevation

Scale: 1/8" = 1'-0"

East Elevation

Scale: 1/8" = 1'-0"



MONUMENT SIGN

SCALE: 1/4" = 1'-0"

EXTERIOR FINISH SCHEDULE

- SPEC-BRIK** AMCON BLOCK
FIELD COLOR: MONTGOMERY
- ROCKFACE BLOCK** AMCON BLOCK
COLOR: CORAL
- STONE VENEER** DUTCH QUALITY STONE
COLOR: 'SIENNA' DRY STACK
- E.I.F.S. CORNICE** DRYVIT
COLOR: 'VAN DYKE' #110
- E.I.F.S.** DRYVIT
COLOR: 'CLOVER' #450
- CAST STONE SILL** ROCKCAST
COLOR: WHEAT STONE
- FABRIC AWNING:** SUNBRELLA
COLOR: SUNBRELLA #4652 'MEDITERRANEAN BLUE'
- PREFINISHED METAL COPING:** UNI-CLAD-FIRESTONE
COLOR: ALMOND
- PREFINISHED METAL COPING:** UNI-CLAD-FIRESTONE
COLOR: ELECTRIC BLUE (TENANT 2 ARCHED COPING)
- ALUMINUM STOREFRONT:** KAWNEER 451T SYSTEM
COLOR: CLEAR ANODIZED WITH CLEAR INSULATED GLASS
- PREFINISHED ALUMINUM COMPOSITE PANEL**
ALPOLIC (ACM): PEARLESCENT ORANGE
- METAL CANOPY**
COLOR: CLEAR ANODIZED